



MHOS NEWSLETTER

www.mhos.us.com

September 2008

Meetings

The Mid-Hudson Orchid Society meets the 2nd Sunday of each month at 1:30 pm at the Union Presbyterian Church at the corner of Balmville Road and Beech Street in Newburgh, NY (Balmville).

Bring your blooming orchids for the show table.

September 14th meeting, a representative from J & L Orchids will speak on pleurothallids, and they will also have a large selection of plants for purchase.

October meeting to be replaced by the Fall Show and Sale on Saturday, October 11th (setup on October 10th).

November 11 – to be announced.

December 9 - Pot Luck Holiday Dinner

Fall Show & Sale October 11th

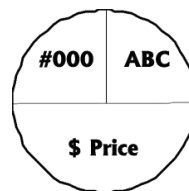
Our October meeting will be replaced by the Fall Show and Sale on Saturday, October 11th. This will be a one-day sale, and volunteers are needed for many aspects of the show. We can always use more help, and there are plenty of ways to do it: working, buying, selling, donating refreshments, answering questions, etc. Thanks to everyone who has already volunteered. Please do come and lend a hand if you haven't already offered. We always need extra kitchen help, and finger foods are always appreciated. Contact Dennis Sandberg to volunteer.

If you are selling plants or would like to bring a display plant or two for the show, the church will be open for setup from 6-8pm on Friday, October 10th (the day before the Show/Sale).

MHOS Members will be admitted to exclusive shopping at 10 am on Saturday morning, and the public will be admitted beginning at 11am and continuing until 3pm.

If you're selling plants, please be sure to use light-colored labels only. Remember that well-groomed plants will always sell better, and a picture of the blooms will help sell plants that are not in bloom at the sale time.

There should be only one label on each plant, with your member number and initials on the top half, and the price on the bottom half (see sample at right). All plants and items should be individually priced (we cannot accommodate "3 for \$10" type pricing).



September 14 meeting

At our September meeting, a representative from J & L Orchids of Easton, CT will speak on pleurothallids, a group of 32 genera of New World orchids. It has been said that anyone who believes "less is more" will love pleurothallids. Many are suited for culture under lights and inside the home. Most of the plants are native to the cloud forests, where they thrive on low temperatures, high humidity and low light. You can see some great photos at www.pleurothallids.com or at J & L Orchids' website, www.jlorchids.com.

Please Post!

MID-HUDSON
ORCHID
SOCIETY



FALL 2008

ORCHID SHOW & SALE

Saturday, October 11, 2008

11:00 AM to 3:00 PM

at the
Union Presbyterian Church, 44 Balmville Road, Newburgh, NY

Education for beginners at 1:00 PM

Orchid experts available all day for your questions



Visit our web site at www.mhos.us.com

The MHOS is an Affiliated Organization of the American Orchid Society

Please help publicize the fall show & sale by posting and handing out copies of the enclosed flyer. You can also print more by going to the Calendar page of the MHOS website.

Reminder

Please bring cardboard boxes to the October 11th Show and Sale.

MHOS Officers & Volunteers 2008

President

Dennis Sandberg
914-962-1541

Vice President

Ruth Nattras
845-343-2901

Membership

Secretaries

Ruth Nattras
845-343-2901
& Betty Gilbert

Corresponding

Secretary

Angie Collini

Program Secretary

Isabel Lopatin
845-265-9057

Recording Secretary

Lois Brennan
845-255-7931

Treasurer

Bob Phillips
518-784-9403

AOS Rep

Janet Jozwiak
845-298-8735

Librarians

Ruth Nattras
845-343-2901
& Marian Kent
845-561-8558

Supplies

Georgette Martin
845-473-6276
after 6 pm only

Newsletter and Website

Elisabeth Mansfield
845-294-1000



Cypripedium calceolus

Here is this month's contribution by MHOS member **John J. Rashak**:

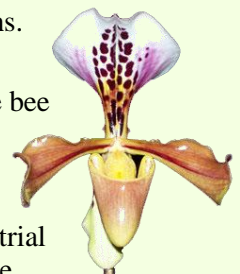
Terrestrial orchids illustrate the adaptability of orchids, which are found in climates as diverse as the hot, dry Australian deserts and the woodlands and grasslands of America. For example, *Cypripedium calceolus*, a lady's slipper orchid, grows in temperate forests, while other *Cypripedium* species are found in areas of Russia bordering on the Arctic Circle. Also, while many epiphytic orchids can survive on the ground, many terrestrial orchids can survive in trees.

Terrestrial orchids are also diverse as to the number found in a particular colony, which can vary from a few to many. For example, species of *Orchis* or *Dactylorhiza* can appear in the thousands in a grassy meadow, giving it a color that can range from purple to pink. However, the number of orchids in a particular colony can also vary from a few to many on a yearly basis. Some species of *Orchis* orchids can remain dormant underground for many years before reappearing.

The basis of a terrestrial orchid is a single leafy stem, which rises from an underground tuber or two, or from many underground rhizomes. The depth of the tuber or rhizome varies, as does the underground environment, which can be sandy in dry areas or marshy in wet areas. In winter, only the underground part of the orchid survives.

A few terrestrial orchids produce pseudobulbs, such as those in the *Bletia* species and many of the species in the *Pleione* genus. These pseudobulbs remain above the ground, but may be obscured by their companion mosses and lichens.

Many terrestrial orchids use deception to attract pollinating insects, the most famous being the *Ophrys* genus. Commonly known as the bee or spider orchids because of the shape of the lip of the flower, these orchids can fool a male spider or bee into believing that they have found a female. In the process of trying to copulate with an orchid, the bee or spider receives or deposits pollen. However, some terrestrial orchids, such as *Paphiopedilum gratixianum* from Laos, use a more direct approach by using a specialized pouch to trap pollinating insects.



Paphiopedilum gratixianum

Dues notice

Since the MHOS membership year is October 1 through September 30, it will soon be time to pay your dues. Ruth Nattras will accept dues payments at the Fall Show and at monthly meetings, or you can mail a check payable to MHOS to:

Ruth Nattras
2 Lake Avenue
Middletown, NY 10940

Dues are \$20 for individuals, or \$25 for families. Dues must be paid by December 31st.

MHOS needs your help

At least one volunteer position within the MHOS will be open at the end of this year.

Janet Jozwiak has chosen not to continue as AOS representative. This person, appointed by the President, acts as the liaison between the AOS and MHOS.

Please consider volunteering your time. If you are interested in helping out, contact President Dennis Sandberg.

Other Area Societies

1st Sunday
Central NY – Syracuse
www.cnyos.org

1st Sunday-1 pm
Northeastern Pennsylvania
Society – Lakeville, PA

1st Saturday
North Eastern New York –
Albany/Colonie, NY
www.nenyos.org

2nd Tuesday
Greater Westchester –
White Plains, NY

2nd Tuesday
Deep Cut – Tinton Falls, NJ
<http://deepcutorchids.googlepages.com/>

2nd Wednesday
Manhattan, NY
www.manhattanorchid.com

2nd Wednesday
Connecticut – Hartford or
New Haven
www.ctorchids.org

2nd Thursday
North Jersey – East Hanover
www.njorchids.org

2nd Thursday
Long Island – Valley Stream

3rd Sunday
Southern Tier –
Binghamton, NY
www.storchidsociety.com

3rd Tuesday
Staten Island, NY

3rd Wednesday
Matinecock - Oyster Bay, NY

3rd Thursday
Ramapo, NJ
www.ramapoorchid.org

4th Tuesday
Greater NY – Bronx, NY
www.gnyos.org

Check for date changes.
Many do not meet in
July or August

We recently received this via email:

To All Orchid Aficionados,

February 4th to 8th, 2009, we are having an event in Quito, Ecuador, that we hope you will decide to attend:

Quito Orchid Expo 2009

Quito Orchid Expo promises to be a major international event. To learn more about what is being planned, please go to

www.QUITOORCHIDEXPO2009.ORG

Questions? Just e-mail Harry Zelenko at zzz@uio.satnet.net.

Hope to see some of the members of your society!
Do join us.



Supplies

If you would like supplies brought to an MHOS meeting, please call Georgette Martin before Friday preceding the meeting at 845-473-6276. Please call **only after 6:00 pm**. For a list of supplies, check the back pages of your Member List or refer to the Members section of our web site. Supplies purchased through MHOS are at very reasonable prices, with no shipping charges.

Events in the Northeast

September 14th – Amherst Orchid Society Plant Sale, Hadley Garden Center, Route 9, across from Buffalo Farm, Hadley, MA. Contact: Harold Norman, (413) 267-5124; leilani.norman@verizon.net.

October 4th & 5th – CNYOS Show and Sale, Beaver Lake Nature Center, 8477 East Mud Lake Rd., Baldwinsville, NY. Contact: Nancy Loveland, 2046 Recreation Ln., Baldwinsville, NY 13027; (315) 638-4741; email nloland@tweny.rr.com or visit www.cnyos.org

October 11th & 12th – Niagara Frontier Orchid Society Show. Contact Joe DiDomenico, diatomite@usa.net

October 17th to 19th – AOS Members Meeting hosted by Longwood Gardens at The Hotel DuPont, Wilmington, Delaware. Contact information to be determined.

October 18th & 19th – Orchid Society of Western Pennsylvania Festival, Phipps Garden Center, 1059 Shady Ave., Pittsburgh, PA. Contact: Edye Van Dyke, 840 Old Mill Rd., Pittsburgh, PA 15238; (412) 963-9790; cvandyke@andrew.cmu.edu

October 24th to 26th – Susquehanna Orchid Society Show, Country Nursery, Mechanicsburg, PA. Contact: Patti Kay Dennis, (717) 439-1107; pk.dennis@verizon.net.

October 25th & 26th – Eastern Canada Orchid Society Show, Days Hotel and Conference Centre, 1005 Rue Guy, Montreal, Quebec. Contact: Judy Adams, 699 Cardinal St., St. Hilaire, Que. J3H 3Z5; (450) 467-4795; judyd.adams@sympatico.ca.

October 31st to November 2nd – **Massachusetts Orchid Society Show**, Tower Hill Botanic Garden, 11 French Dr., Boylston, MA. Contact: Joanna Eckstrom, 14 Laurel Hill St., Wilton, NH 03086; (603) 654-5070; jkeckstrom@comcast.net.

November 7th & 8th – Fourth Annual Merritt Huntington Memorial Symposium, Virginia Beach, Va. Contact Dot Pierce pierce.db@verizon.net

These events and others around the country can be found online at: www.aos.org/aos/events courtesy of the AOS. Check this website before traveling to see if there may be a local orchid event at your destination. Everything published in *Orchids* magazine is also on the web page.

AOS Judging

The Northeast Judging Center holds two monthly orchid judging sessions:

1st Saturday of each month at Tower Hill Botanic Garden, Boylston, MA. New contact for directions: Robert Winkley (617) 282-7351.

3rd Saturday of each month at Hampton Inn, 200 Tarrytown-White Plains Rd (Rt. 119), Elmsford, NY (at I-287, exit 1). Slides or presentations at 10am, judging begins around 12pm; bring your lunch.

Attention

Award-Winning Members

We would like to give recognition to MHOS members when they receive any award. If you have been honored with an award, please notify us so we can include it in our correspondence on our website. And if you have a picture of the award-winning orchid, we'd love to include it! Email Elisabeth@MansfieldCommercial.com



Mid-Hudson Orchid Society

2624
Goshen, NY 10924
3 Hatfield Lane, Suite 3A
c/o Elisabeth Mansfield

Directions to AOS Judging at the Hampton Inn in Elmsford (Note: there may be construction at the I-287 exit to Route 119 so keep your eyes open for lane closures or slight changes.)

FROM ORANGE, ULSTER COUNTIES, NEWBURGH, KINGSTON:

South on the NYS Thruway, to I-287 East (toward White Plains), go over the Tappan Zee Bridge. Continue on Thruway to second exit: Exit 8 – Cross Westchester Expressway (Route 287 East). Take 287 East to first exit on your right – Exit 1. Take the fork on your right to Elmsford. At the end of the ramp, turn right on Route 119. Hotel is on your left. Go to the second light, make U turn and go onto the Hotel ramp to the parking lot.

FROM NORTHERN WESTCHESTER, PUTNAM, DUTCHESS COUNTIES: South on I-684, to Cross Westchester Expressway Route I-287

West. Stay on 287 West to Exit 1 make left turn at light – Hampton Inn is a short distance on right. OR South on Taconic Parkway to South/West Sawmill to I-287 West to Exit 1, make left turn at light – Hampton Inn is a short distance on right. OR South on Route 9 to 9A to Rt 119 Elmsford, NY, turn right on Rt 119, go about 2-3 long blocks. See Hampton Inn on left, make U turn at light, and turn into Hampton Inn on right.